

595MH EPIC

Rugged Self-Propelled Carrier

KNUCKLEBOOM LOADERS > SELF-PROPELLED

SCRAP



Introducing the Barko 595MH EPIC Rugged Self-Propelled Carrier

Dependable. Exceptional. AWESOME.
That's what customers say about the Barko 595MH EPIC Rugged Self-Propelled Carrier. It's equipped with EPIC, an advanced electronic control system, to make the 595MH POWERFUL. THRIFTY. SMART. It provides the best fuel efficiency, work productivity, and the lowest total cost of operation than any other product in its' class. It is BEAUTIFUL, but don't let that fool you. The power and swing torque of the 595MH EPIC Rugged Self-Propelled Carrier makes it a BEAST capable of delivering more loads every day. The 595MH EPIC Loader performs harder and delivers the results you expect, all while using less fuel and providing more comfort. There's nothing better than a Barko – Guaranteed!



Visit our website at:
www.barko.com
to read customer testimonials



BARKO HYDRAULICS, LLC
One Banks Avenue | Superior, WI 54880 | Ph: 715.392.5641 | Fx: 715.392.3931

WWW.BARKO.COM

595MH EPIC

Rugged Self-Propelled Carrier

KNUCKLEBOOM LOADERS > SELF-PROPELLED

SCRAP

MAXIMUM LIFT CAPACITY

40' 0" (12.19 m) straight boom, less attachment.

Front Lift Capacity

| Radius | Lift |
|---------------|-------------------------|
| 10' (3.00 m) | 33,650 lbs. (15,263 kg) |
| 15' (4.57 m) | 31,780 lbs. (14,415 kg) |
| 20' (6.10 m) | 22,850 lbs. (10,364 kg) |
| 25' (7.62 m) | 16,090 lbs. (7,298 kg) |
| 30' (9.14 m) | 12,290 lbs. (5,574 kg) |
| 35' (10.67 m) | 9,400 lbs. (4,263 kg) |
| 40' (12.19 m) | 6,190 lbs. (2,807 kg) |

Side Lift Capacity

| Radius | Lift |
|---------------|-------------------------|
| 10' (3.00 m) | 33,650 lbs. (15,263 kg) |
| 15' (4.57 m) | 31,780 lbs. (14,415 kg) |
| 20' (6.10 m) | 20,930 lbs. (9,493 kg) |
| 25' (7.62 m) | 14,920 lbs. (6,767 kg) |
| 30' (9.14 m) | 11,180 lbs. (5,071 kg) |
| 35' (10.67 m) | 8,380 lbs. (3,801 kg) |
| 40' (12.19 m) | 6,190 lbs. (2,807 kg) |

Counterweight – 10,000 lbs. (4,536 kg)

BOOM DATA

| | |
|--------|-----------------|
| 40' 0" | (12.19 m) |
| Main | 22' 6" (6.86 m) |
| Stick | 19' 0" (5.79 m) |

Boom structure: All welded construction with fabricated box type design. Aluminum bronze bushings with grease grooves at boom pivot points.

BOOM REACH

Based on 50" (1,270 mm) high carrier frame.

| | |
|------------|------------------|
| 40' 0" | (12.19 m) |
| Horizontal | 40' 2" (12.24 m) |
| Vertical | 42' 0" (12.80 m) |

CYLINDERS

Hydraulic cylinders with wear rings on pistons and bolt on glands for extended life. All cylinders are made of heavy wall steel tubing. Induction hardened cylinder rods with heavy chrome plating. Hose break protection valves on boom cylinders. Spherical bearings at all boom cylinder pivots.

AVAILABLE POWER SOURCES

Cummins QSB 6.7 L diesel, Tier 3 173 hp (129 kw) @ 2200 rpm.

John Deere 6068 H diesel, Tier 3 173 hp (129 kw) @ 2200 rpm

Fuel Reservoir: 120 gallon (454 L).

HYDRAULIC SYSTEM

120 gallon (454 L) hydraulic oil reservoir with return line filter, shut off valve on pump suction line.

Pumps: Variable displacement piston pump producing 119 GPM (450 LPM).

Heavy wall tubing and multi-wire braided hose throughout system.

Main system operating pressure: 4000 PSI (275 BAR) with 3600 PSI (248 BAR) to swing and grapple functions

Quick disconnect diagnostic ports.

SWING SYSTEM

Continuous rotation on 54" (1372 mm) internal tooth turntable bearing.

Swing speed: 9 rpm – power transmitted through dual motors and planetary gearboxes.

3600 psi (248 BAR) operating pressure to swing and grapple

Swing torque: 55,000 ft. lbs. (74,570 Nm) (100% theoretical).

Tailswing: 9' 6" (2.89 m) with counterweight

OPERATOR'S CAB

F.O.P.S. certified.

38-1/2" x 55" (978 mm x 1397 mm) forward sloping pressurized cab with sound suppression insulation.

Roof window, sliding side windows with tinted glass on all windows.

Pantograph windshield wipers, washer, and dome light.

Adjustable suspension style seat with arm rests. Dual joystick controls.

Dash console with cab accessory switches and start/stop controls all located for easy access.

Warning lights & monitor system.

Digital Display: water temperature, voltage, engine oil pressure, fuel, hour meter and engine RPM.

AM/FM radio, CD player, CB radio.

Swing control operated by foot pedal.

Swing out door and front cab guard.

(6) 12 volt DC halogen cab lights.

Climate controlled heating and air conditioning.

Central turntable greasing system.

Steering Wheel.

Foot pedal travel.

CONTROL OPTIONS

Magnum – Barko's proprietary hydraulic pilot operated controls with fast functional speeds and excellent fuel economy.

EPIC – Electronic upgrade to Magnum controls with increased fuel economy, additional operator modes, and performance enhancements.

UNDERCARRIAGE

Hydrostatic Drive: Two speed, 4WD powershift transmission powered by a single variable displacement piston motor.

Axles: Planetary drive axles front and rear.

Front oscillating 7 degrees in frame and rear rigid to frame.

Tire Options:

Standard heavy-duty 10.00-20 dual tires.

Premium heavy-duty 10.00-20 dual tires.

Foam filled heavy-duty 10.00-20 dual tires.

Solid rubber 10.00-20 dual tires.

Solid rubber comfort ride 10.00-20 dual tires.

Solid rubber Super Single tires.

Service Brakes: Hydrostatic-dynamic braking mechanism.

Hydraulic multi-disc brakes on all four wheels operated by foot pedal.

Parking Brakes: SAHR brake acting on transmission.

Travel Alarm

Steering: Hydraulic two wheel steering.

Stabilizers: Front and rear mounted fold-down type hydraulic stabilizer legs with a 13' 4" (4.06 m) spread, four double acting cylinders with lock valves, 7" bore x 22" stroke (177 mm x 885 mm) with 4" (101 mm) rods.

High Speed: 12 MPH (19 km/h)

Low Speed: 3 MPH (4.8 km/h)

Maximum Gradeability: 43%

Wheelbase: 9' 0" (2.74 m)

Turning Radius: 22' 1" (6.73 m) outside tires.

MISCELLANEOUS

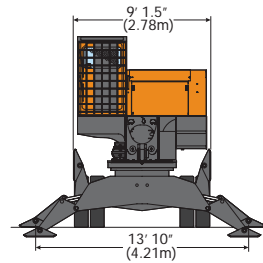
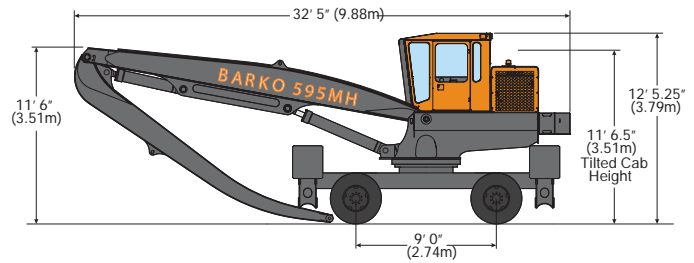
Weight with standard equipment, 10,000 lb.

(4,536 kg) cast steel counterweight and oil:

51,500 lbs. (23,400 kg) (not including attachment)

Equipment greased and hydraulic tank filled.

Removable panel for serviceability.



OPTIONS

Boom Lights.
Guarding Package for underside of platform.
Guarding Package for cab.
Orange peel grapple.
10kw magnet.
15kw magnet.
20kw magnet.
Auxiliary Hydraulic Oil Cooler.
23" Hydraulic Tilt Cab Riser.
42" Fixed Cab Riser.
42" Hydraulic Tilt Cab Riser.
Swing Brake.
12V Hydraulic Transfer Pump.
Engine Block Heater.
Thermal Bypass Kit.
Tank Heater.
Automatic Grease System.
AFEX Fire Suppression System.
5 kw Hydraulic Reservoir Heater.
10 kw Magnet Generator Package.
15 kw Magnet Generator Package.
20 kw Magnet Generator Package.
Water Separator Kit.



BARKO HYDRAULICS, LLC

One Banks Avenue | Superior, WI 54880 | Ph: 715.392.5641 | Fx: 715.392.3931 | www.barko.com